

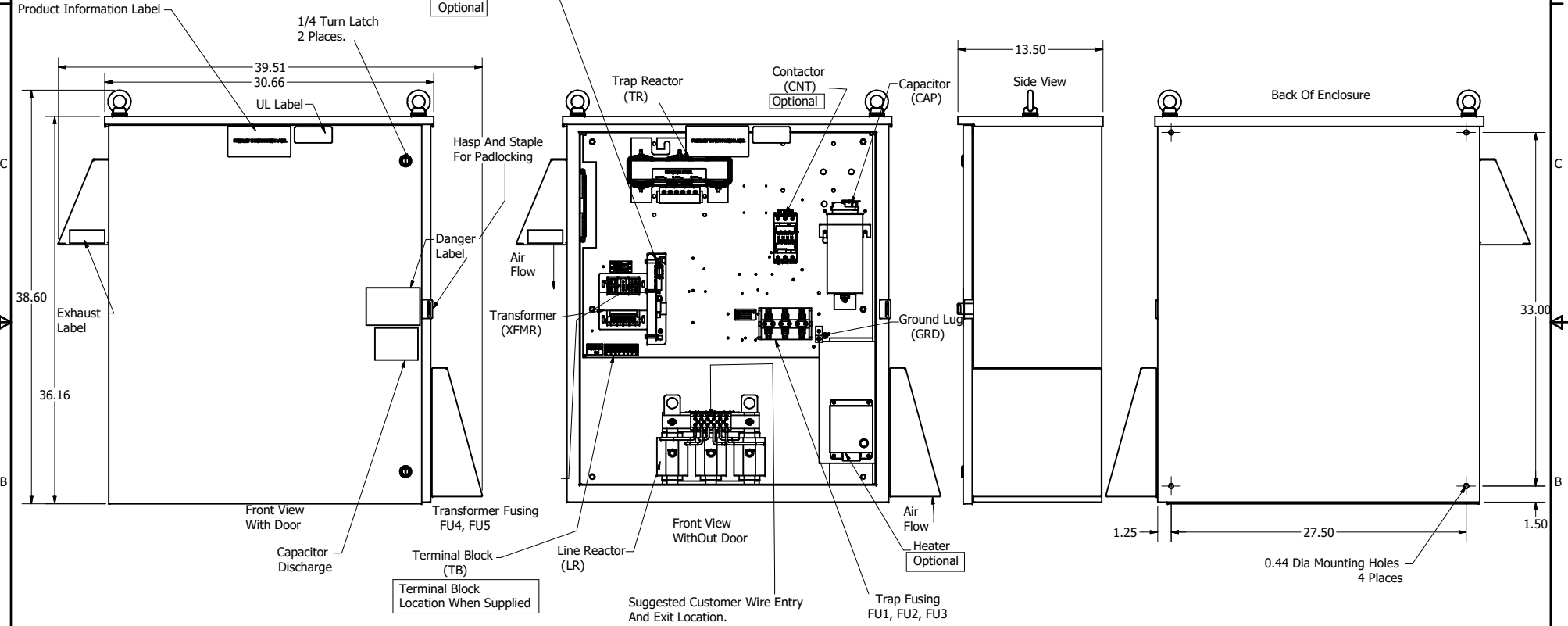
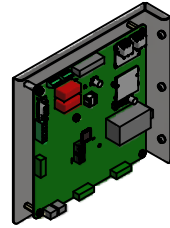
HGP Part Number	HorsePower (HP)	kVar	Harmonic	Voltage (V)	HZ.	Phase
HGP0020BW3----	20	5.0	5th	240	60	3

Note: For Torque Information See IOM Manual

Customer Connections.  
L1, T1, L2, T2, L3, T3  
Wire Range: 1 AWG to 22 AWG.

Ground Lug  
Wire Range: 1/0 to 14 AWG.

HGP Part Number	Schematic Drawing #	Approx Weight (LBS)
HGP0020BW3S0000	30209-1S	239
HGP0020BW3C0000	30209-1	241
HGP0020BW3C000H	30209-1H	245
HGP0020BW3C1000	30209-PQ	244
HG0020BW3C100H	30209-PQH	248



HGP0020BW3----					
Components	S0000	C0000	C000H	C1000	C100H
Line Reactor (LR)	x	x	x	x	x
Trap Reactor (TR)	x	x	x	x	x
Capacitor (Cap)	x	x	x	x	x
Trap Fusing, FU1, FU2, FU3	x	x	x	x	x
Contactor (CNT)		x	x	x	x
Transformer (XFMR)	x	x	x	x	x
XFMR Fusing, FU4, FU5	x	x	x	x	x
Heater			x		x
PQConnect Board				x	x

NOTE: USE ONLY HUBS OR FITTINGS THAT COMPLY WITH UL514B FOR TYPE 3R ENCLOSURES

Customer Is Responsible For Installation to Meet All National And Local Electrical Codes.

Material(s) Shall be RoHS Compliant

THE INFORMATION AND DESIGNS CONTAINED IN THIS DRAWING ARE CONFIDENTIAL AND THE PROPRIETARY PROPERTY OF ALLIED MOTION TECHNOLOGIES INC. AND ITS SUBSIDIARIES. NEITHER THIS DESIGN NOR ANY INFORMATION CONTAINED IN THIS DRAWING MAY BE REPRODUCED OR DISCLOSED TO OTHERS WITHOUT THE EXPRESS WRITTEN CONSENT OF ALLIED MOTION TECHNOLOGIES INC. AND ITS SUBSIDIARIES.					TOLERANCES (EXCEPT AS NOTED)	 W182N10611 (Rev 1) 1/16/20 Germantown, WI 53022 © 2023 TCI, LLC Harmonic Guard Passive HGP, 20HP, 240/3/60, Type 3R 106433DG
	B	\$265, Enclosure Updated	8/6/2020	DSW	FRACTIONAL ± 1/32	
	A	AS DESIGNED	2/15/16	DSW	ANGULAR ± 1°	
	NO	REVISION	DATE	BY	SCALE: 1/8	

D  
C  
B  
A

D  
C  
B  
A